



# FINLAND-CHINA FOOD AND HEALTH NETWORK

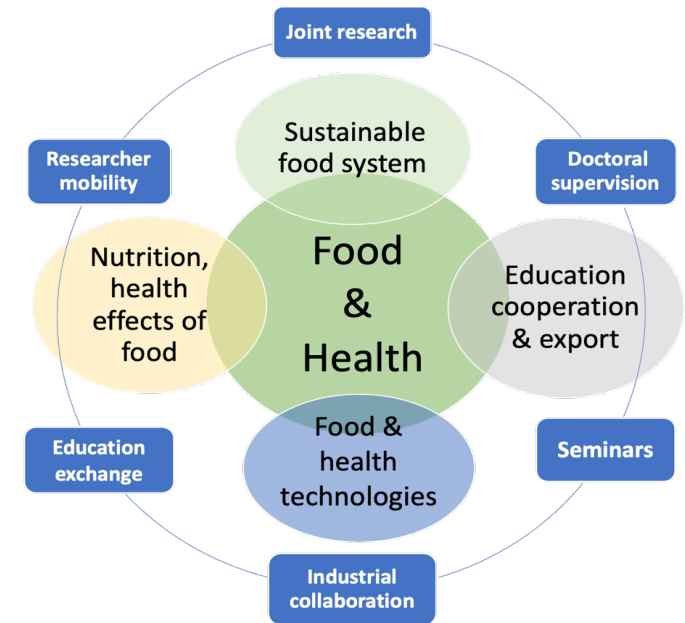
*Growing excellence together*

Professor Baoru Yang  
International Liaison Officer Kirsi Korpela

**7.2.2025**

# FINLAND-CHINA FOOD AND HEALTH NETWORK (FCFH) IN A NUTSHELL

- A multidisciplinary network for research and innovation
- Focusing on global challenges in sustainable food and health.
- three research subgroups focusing on sustainable food system, nutrition and health effects of food, and technologies
- Educational collaboration to ensure future generation of experts and talents
- Including 21 Finnish HEI and Chinese partners



# MAIN OUTCOMES

- Joint cross-disciplinary projects & external funding
- Joint publications and conference presentations
- Doctoral theses completed or got started
- Joint conferences and courses
- Mobility & exchange of researchers, students, and teachers
- New partnerships and deepening of cooperation
- Benchmarking of research infrastructures
- On-going and planned future joint activities

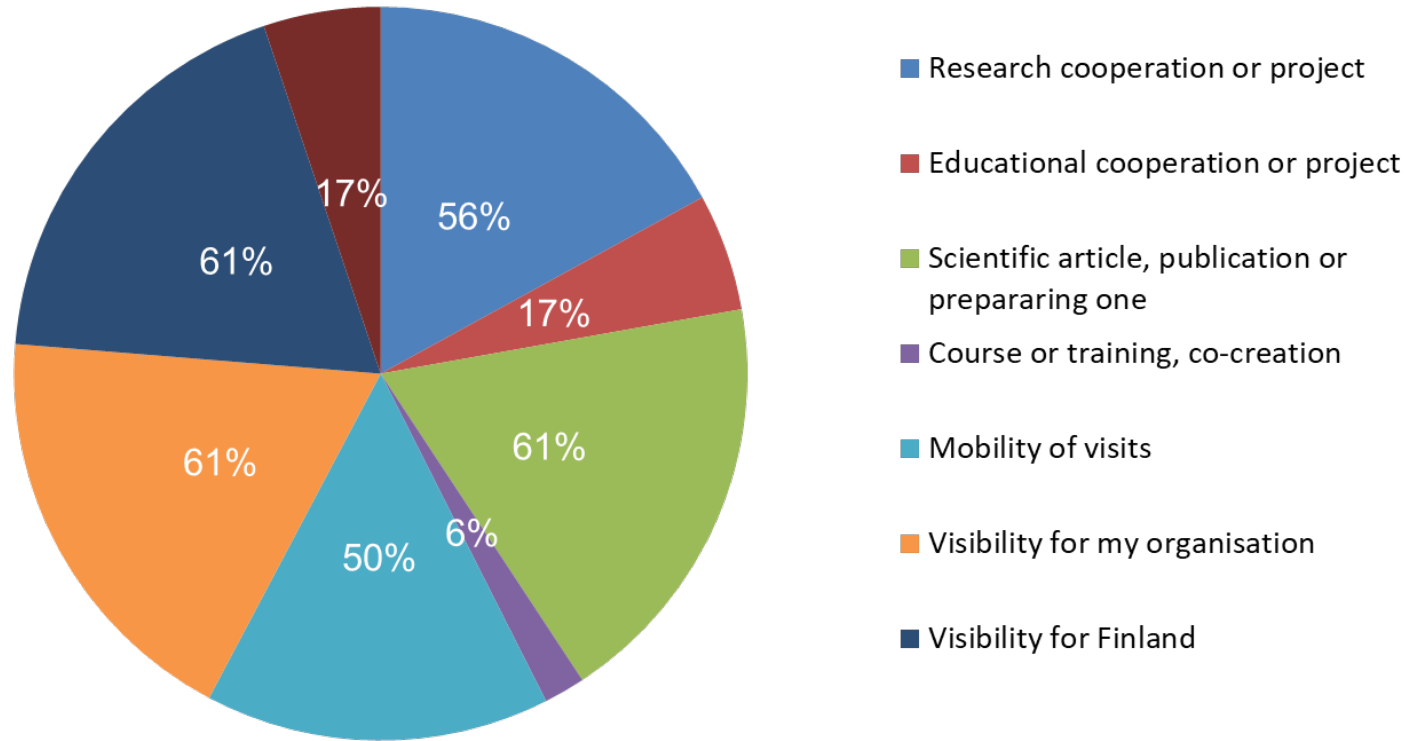
# IMPACT



# MEMBER EXPERIENCE

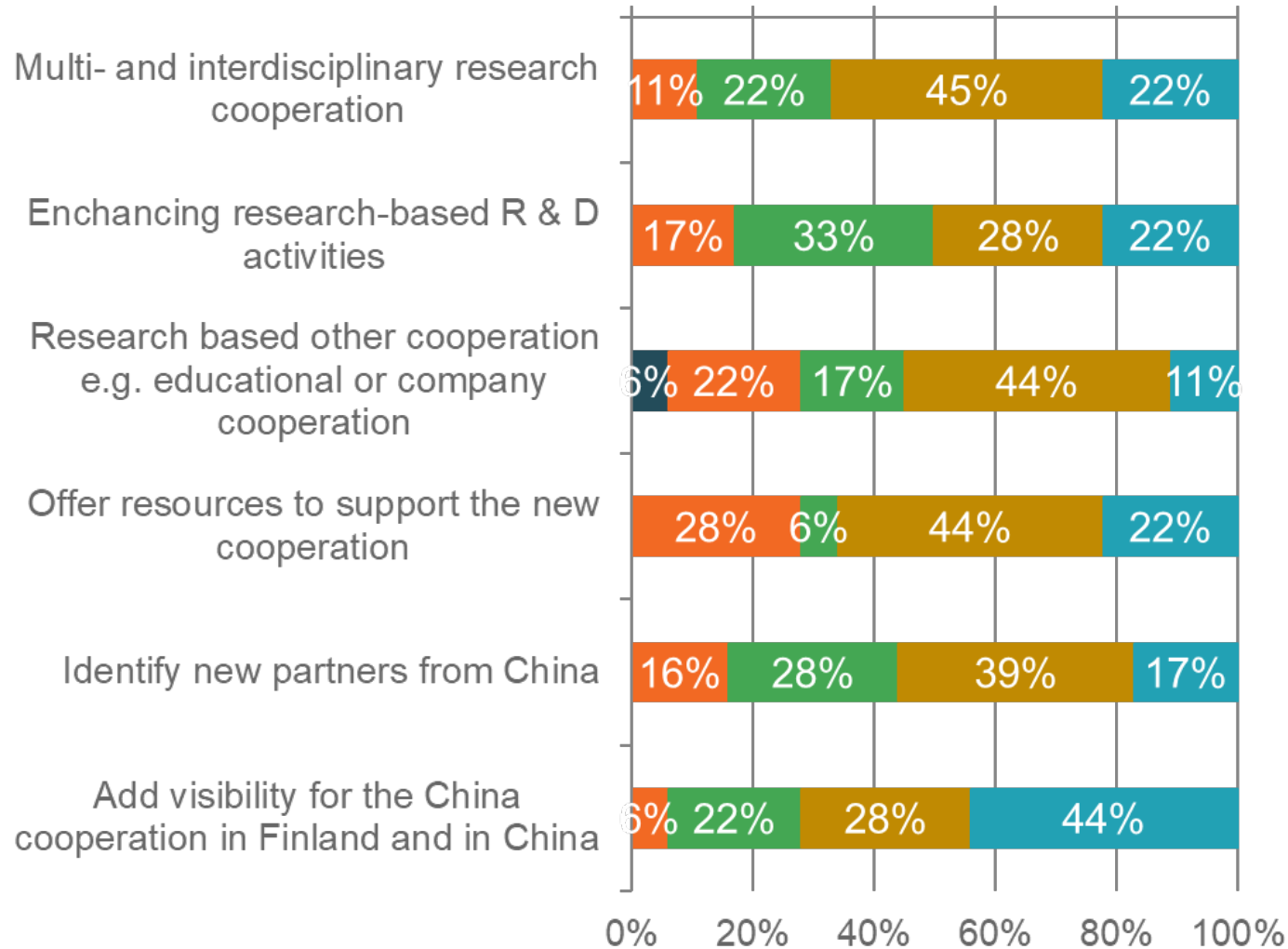
- overall score for impact of the members' own contribution to the cooperation 3.5/5
- estimate of the total impact of the network 4.0/5
- estimated relevance of the national level cooperation in connection to China cooperation 3.7/5

**IMPACT: The main outcomes from my own/ my research group's/ my institution's point of view (you can choose several options). You can choose several. You can specify with a few words.**



# MEMBER EXPERIENCE

## Reaching the goals of the network



# BEST PRACTICES ACCORDING TO MEMBERS

- |  |
|--|
| <ul style="list-style-type: none"><li>• Seed funding to enable research collaboration between Finnish and Chinese researchers even when both were working in Finland, and mobility</li><li>• Seminars and symposiums were also great practice.</li><li>• The combination of online event with onsite events organised to connect researchers</li><li>• Thematic working groups were good because they were at suitable size to enable efficient working.</li></ul> |
| <ul style="list-style-type: none"><li>• Writing joint papers with Chinese researchers on topics that require complementary expertise from Finland and China, such as prevalence of celiac disease in China.</li></ul>  |
| <ul style="list-style-type: none"><li>• The website and newsletters are useful in communication and disseminating the activities and events</li></ul>  |
| <ul style="list-style-type: none"><li>• To be "brave" to contact people in the first place. Some of them might surprise you positively.</li></ul>  |
| <ul style="list-style-type: none"><li>• Research mobility is an important means</li><li>• If possible, I would like to explore opportunities of double degrees</li></ul>   |
| <p>I think there is enormous potential here to develop strong strategic partnerships and I would say the best practice to share is coordinated and sustained mobility. I visited China and Hong Kong a total of five times during the FCFH program.</p>  |

**Seed funding**

**Thematic group**

**Writing joint papers**

**Live events and webinars**

**Website and news letter**

**Be brave to make the contact**

**Coordinated & sustained mobility**

# REFLECTIONS

- The seed funding has been very important instrument to facilitate the collaboration.
- During the funding period, FCFH created valuable partnership and mutual trust for continuing collaboration
- The continuity of policy and funding support is crucial for lasting impact. There are lots of inquiry from Network members and stakeholders about the future of the FCFH beyond 2024.
- Despite the strong interest at the initial stage, some HEIs e.g. Finnish UAS did not develop sustained activities. It is worth to consider focusing on an alliance of a few key Finnish universities in future activities.
- Unexpected events such as Covid-19 pandemic posed significant challenges to international mobility and exchange. The impact was partially compensated by technology platforms enabling webinars and other online communication.
- Geopolitical events and landscapes have and likely will continue to have strong impact on international collaboration, and support to researchers is increasingly important.



# VISION FOR FUTURE

- China is very strong in Food Science and Technology, with large number of food scientists and extensive covering all aspects of food, nutrition, and technology. Finland-China collaboration is mutually beneficial -> This confirms the vision of establishing fcfh network.
- A Finland-China Food and Health **flagship programme** based on the outcomes of FCFH would be an effective way to bring the collaboration to the next level
  - ✓ deepen the collaboration on a focused theme by involving top-level universities from both countries
  - ✓ combining research, innovation, and education
  - ✓ strong governmental support in both countries
  - ✓ joint funding instruments:
  - ✓ collaboration with Business Finland-MOST joint calls to fund FOOD research and innovation, and with Team Finland activities.



# THANK YOU FOR YOUR SUPPORT!



*Growing excellence together*

# ACTIVITIES

- **Kick-off events, research seminars/webinars and live symposiums:** Live symposiums, three in Finland, one in China were organized, to enhance collaboration and visibility of the FCFH network in both countries. These events also strongly involved companies from both countries and received strong support of Team Finland, the Ministry of Education and Culture Finland, and the Embassy of China.
- **Seed funding support for research collaboration and mobility**
- **Joint research, publications, and doctoral education**
- **Applications of external funding:** Example: a large funding application was prepared and submitted to HEU6 in 2022, involving close to 30 partner organizations from Europe and China, both academia and companies.
- **Bilateral academic exchange activities:** Very active research mobility of short- to long-term (1 week to 18 months) were realised between the two countries in both directions.
- **Communication activities**



**FINLAND-CHINA  
FOOD AND HEALTH NETWORK**



**UNIVERSITY  
OF TURKU**



**FINLAND-CHINA  
FOOD AND HEALTH NETWORK**