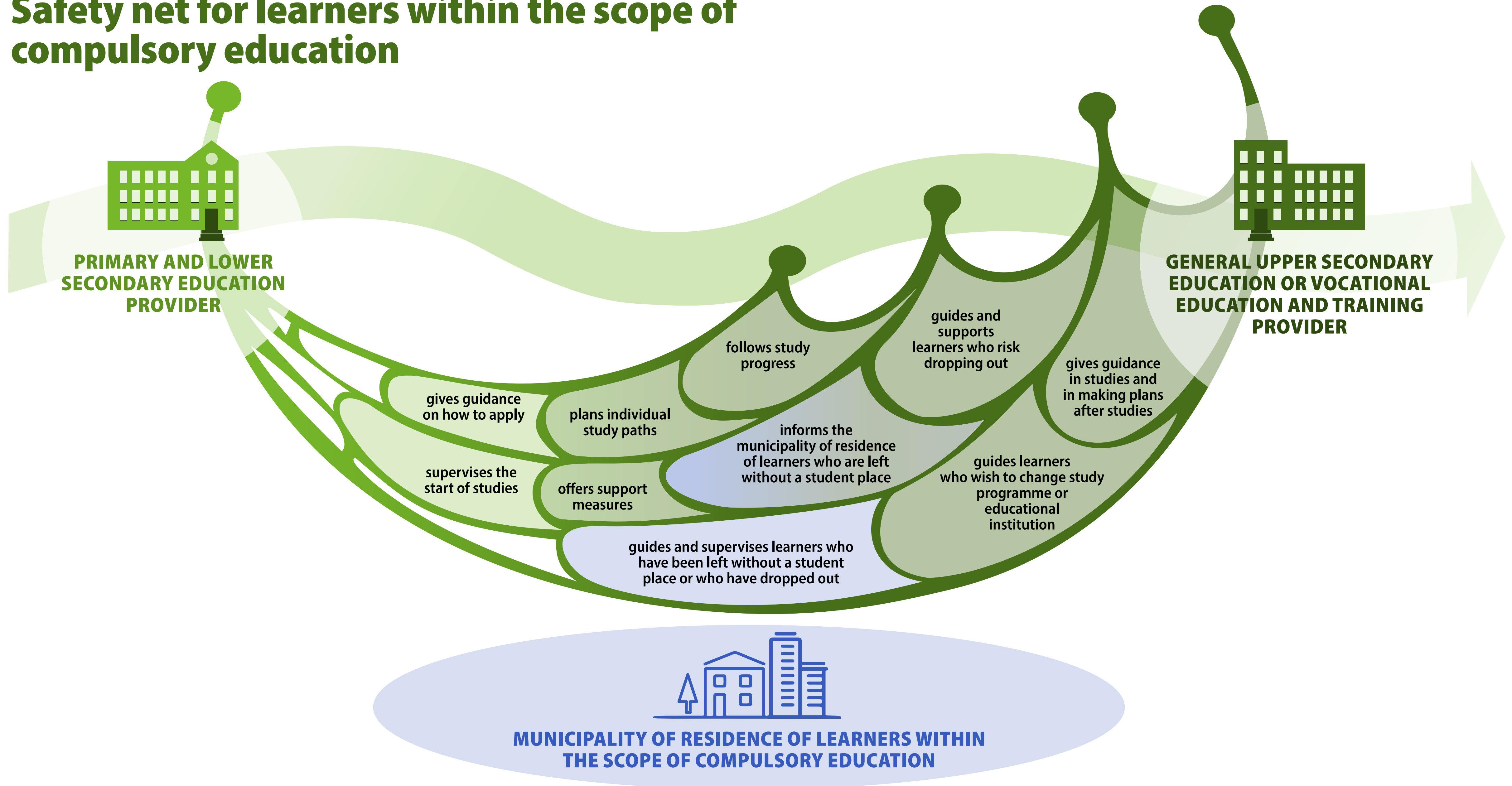


Safety net for learners within the scope of compulsory education



Safety net for learners within the scope of compulsory education

PRIMARY AND LOWER SECONDARY EDUCATION PROVIDER

- guides learners to apply for studies after comprehensive school through the joint application procedure and, if necessary, through the rolling application procedure.
- supervises that learners within the scope of compulsory education start their studies.
- informs the municipality of residence and the learner's parents or other guardians if a learner within the scope of compulsory education fails to accept a student place or does not take up studies after comprehensive school.

GENERAL UPPER SECONDARY EDUCATION OR VOCATIONAL EDUCATION AND TRAINING PROVIDER

- plans individual study paths with the students to meet their needs. Parents or other guardians and, if necessary, a representative of working life and other relevant partners are involved in the planning process.
- monitors each student's study progress based on personal study plans. The plans are reviewed and revised over the course of studies, if necessary.
- offers students the support measures they need.
- guides and supports students who risk dropping out. If necessary, examines together with the students and their parents or other guardians different options for completing the studies in another learning environment or other study programme. Checks the adequacy of each student's support measures and refers the student to other appropriate services, where necessary.
- guides students who wish to switch to a different qualification, study programme or educational institution. Where a student changes education provider, the new education provider becomes responsible for the guidance, support and supervision of the student.
- guides students in planning their studies, further studies and career paths.
- guides students to further studies and to make career plans even after the year following the one when the students complete an upper secondary certificate or qualification.
- informs the municipality of residence of students within the scope of compulsory education if they drop out and do not have a new student place.

MUNICIPALITY OF RESIDENCE OF LEARNERS WITHIN THE SCOPE OF COMPULSORY EDUCATION

- provides guidance during the application phase and makes sure that learners within the scope of compulsory education start their studies. If necessary, assigns a student place. This applies to learners in compulsory education who have failed to start their studies or who have dropped out and do not have a new student place.
- guides and supervises that compulsory education is completed when no one else is responsible for the guidance and supervision of a student within the scope of compulsory education.